

Neoplasia del Pene



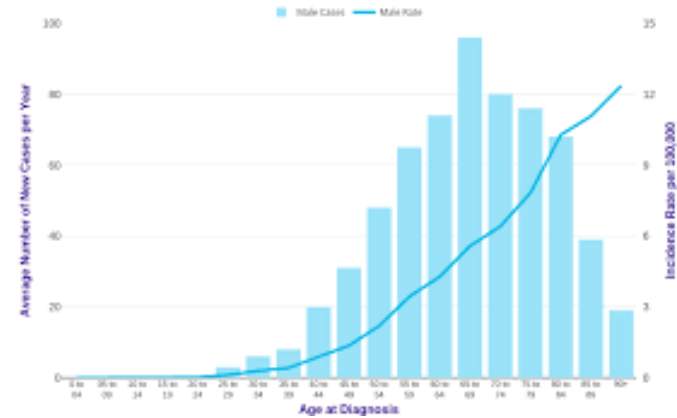
Epidemiologia

<1 su 100000 per anno

Aumenta con età

– 6^a decade

1/3 dei casi correlato ad infezioni HPV correlate



Fattori di rischio

PATOLOGIA	OR
Fimosi	16
Lichen sclerosus	
Sporalene fototerapia UV	9,54
Fumo	5
HPV	
Rapporti con partner multipli	3-5

Condizioni precancerose

Lesions sporadically associated with squamous cell carcinoma (SCC) of the penis:

Bowenoid papulosis of the penis (HPV related)

Lichen sclerosis

Premalignant lesions (up to one-third transform to invasive SCC):

Penile intraepithelial lesions

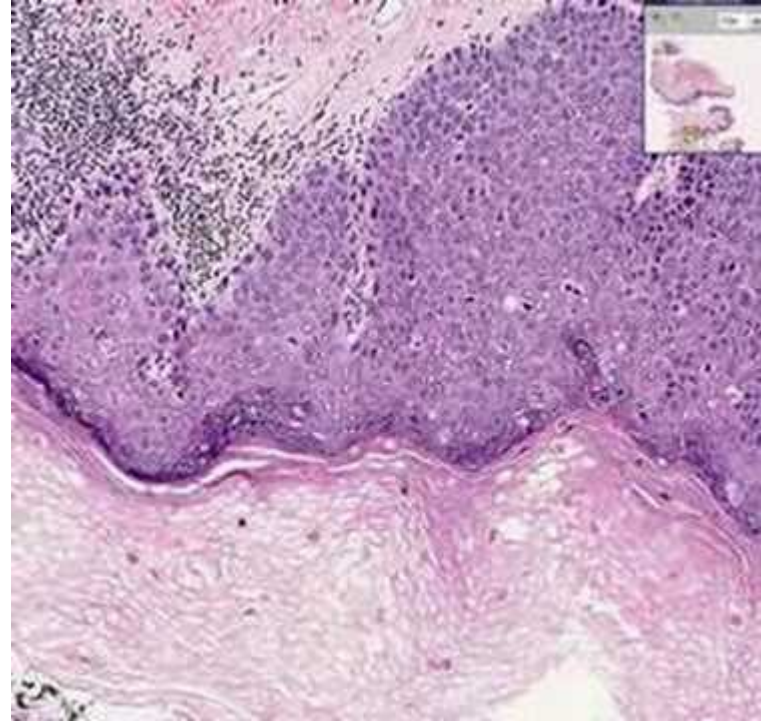
Giant condylomata (Buschke- Löwenstein)

Bowen's disease

Paget's disease (intradermal ADK)

Istologia

Carcinoma
squamocellulare



Diagnosi

Lesione vegetante
piana ulcerata a livello
del pene del glande e
del prepuzio

Trattamento

Ottenere la massima radicalità e quanto possibile conservazione organo

Linfadenectomia inguinale

Margine libero 3-5-8 mm

Trattamenti

ND:YAG laser
C02 laser

Moh's micrographic
surgery

Preputial excision

Glans resurfacing

Glansectomy

Partial penectomy

Total penectomy

TNM staging system

Table B3-2. AJCC STAGING FOR PENILE CANCER

Primary Tumor (T)			
Tx	Primary tumor cannot be assessed		
T0	No evidence of primary tumor		
Tis	Carcinoma in situ		
Ta	Noninvasive verrucous carcinoma		
T1	Tumor invades subepithelial connective tissue		
T2	Tumor invades corpus spongiosum or cavernosum		
T3	Tumor invades urethra or prostate		
T4	Tumor invades other adjacent structures		
Lymph Nodes (N)			
Nx	Regional nodes cannot be assessed		
N0	No regional lymph node metastases		
N1	Metastasis in a single regional lymph node		
N2	Metastases in multiple or bilateral superficial inguinal lymph nodes		
N3	Metastases in deep inguinal or pelvic lymph nodes; unilateral or bilateral		
Distant Metastasis (M)			
Mx	Distant metastasis cannot be assessed		
M0	No distant metastasis		
M1	Distant metastasis		
Staging Group			
Stage	Tis	N0	M0
Stage 0	Ta	N0	M0
Stage I	T1	N0	M0
Stage II	T1	N1	M0
	T2	N0	M0
	T2	N1	M0
Stage III	T1	N2	M0
	T2	N2	M0
	T3	N0	M0
	T3	N1	M0
	T3	N2	M0
Stage IV	T4	Any N	M0
	Any T	N3	M0
	Any T	Any N	M1

AJCC: American Joint Commission on Cancer.
Data from Fleming ID, Cooper JS, Henson DE, et al (eds): AJCC Cancer Staging Manual, Philadelphia, PA: Lippincott, 1997.

